

The distinctive practical styling provides maximum environmental protection for most situations.

Suitable for both domestic and commercial applications, the Deta Loblite range can be used for the power and control of lighting and heating of patios and in the garden, mowing, hedge trimming, pond and water features.

Deta Loblite carries a 10 year guarantee and is manufactured to the highest standards within an ISO-9001 controlled environment.



Detachable lid to simplify and speed up installation



High visibility.

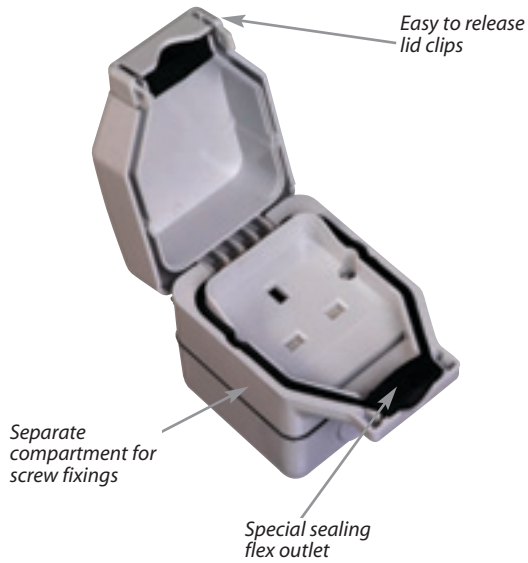
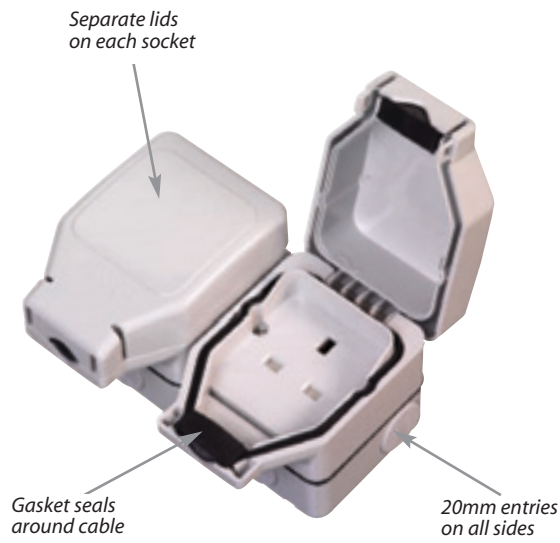


Standard 2 gang switched socket fits IP55 enclosure



Sockets will accept moulded on plugs whilst retaining IP rating





Deta Loblite products are manufactured from a tough and durable ABS polycarbonate moulding material, proven in use across many external applications.

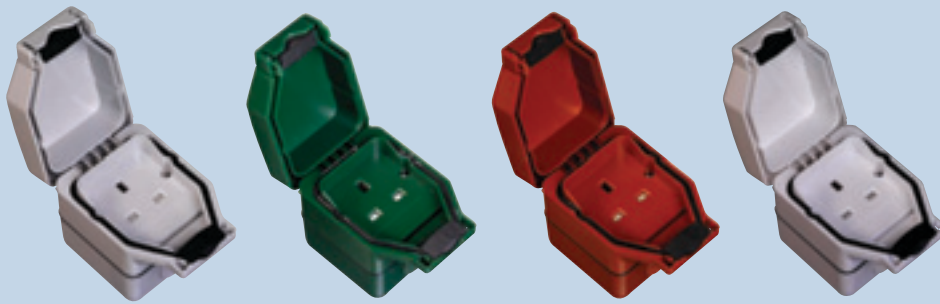
Deta Loblite products are a no nonsense, easy to fit, fault free range, encountered by our many satisfied customers.

The comprehensive range is fit for the task of supplying power in an environment where an IP rating up to IP56 is required.



# IP56 Socket Outlets

# WEATHERPROOF



8810.00

8210.00-C

8310.00-C

8410.00-C



8840.00

8740.00-C

8840.00-C

## Socket Outlets

### 13Amp

8810.00-C 1 gang - Light Grey\*

8210.00-C 1 gang - Green

8310.00-C 1 gang - Terracotta

8410.00-C 1 gang - White

8710.00-C 1 gang - Orange

\*Also available boxed - Cat no 8810.00

8840.00-C 2 gang - Light Grey\*

8240.00-C 2 gang - Green

8340.00-C 2 gang - Terracotta

8440.00-C 2 gang - White

8740.00-C 2 gang - Orange

\*Also available boxed - Cat no 8840.00

## IP56 SOCKET OUTLETS

- IP rated with plug inserted
- 1 gang & 2 gang versions
- Twin lids on 2 gang sockets
- Self sealing flex outlet
- Fixings in segregated compartment prevents ingress of water
- Clear terminal markings
- Pre-drilled 20mm entries giving easy cable access
- Available in 5 different colours
- Clam packaging
- All 13A sockets comply with BS 1363
- 10 year guarantee



# WEATHERPROOF

## IP56 RCD Socket Outlets

### RCD Socket Outlets

#### 13 Amp 30mA Passive

- 8803.00-C 1 gang - Light Grey\*
- 8203.00-C 1 gang - Green
- 8303.00-C 1 gang - Terracotta
- 8703.00-C 1 gang - Orange

8803.74-C RCD Spur - Light Grey

\*Also available boxed - Cat no 8803.00



8803.00-C



8203.00-C



8303.00-C

### Switches

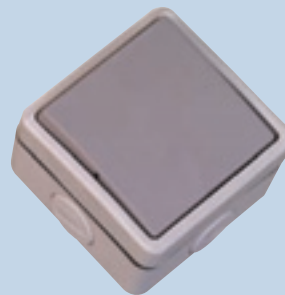
#### 10Amp

- 8815.00-C 1 gang 2 way - Light Grey
- 8715.00-C 2 gang 2 way - Light Grey
- 8615.00-C 1 gang 2 way 'Press'  
- Light Grey

### Switches

#### 20Amp

- 8515.00-C 1 gang DP - Light Grey



8815.00-C



8715.00-C

## IP56 Switches

### Passive latching

- Passive latching does not trip in the event of a power failure
- Suitable for passive devices such as fridges, freezers etc

### Active non-latching

- Trips in the event of a power failure
- Suitable for active devices such as power tools

### IP56 RCD SOCKET OUTLETS

- IP rated with plug inserted
- Twin lids
- Self sealing flex outlet
- Fixings in segregated compartment prevents ingress of water
- Clear terminal markings
- Pre-drilled 20mm entries giving easy cable access
- Available in 4 different colours
- Clam packaging
- Complies with BS 1363
- 3 year guarantee

### IP56 SWITCHES

- Fixings in segregated compartment prevents ingress of water
- Easily accessible slotted terminal screws
- Clear terminal markings
- Pre-drilled 20mm entries giving easy cable access
- Clam packaging
- Complies with BS EN 60669-1
- 10 year guarantee



# IP55 Twin & RCD Sockets

# WEATHERPROOF



5525.00-C



5535.00-C



5561.00-C

## Socket Outlets

### 13Amp

#### Clam Packaged

5525.00-C 2 gang RCD socket  
- 30mA passive

5535.00-C 2 gang RCD socket  
- 30mA active

5561.00-C 2 gang switched socket

#### Box Packaged

5525.00 2 gang RCD socket  
- 30mA passive

5535.00 2 gang RCD socket  
- 30mA active

5561.00 2 gang switched socket

## IP55 SOCKET OUTLETS

- Low pressure water jet proof with plug inserted
- Light grey with smoked tinted lid (detachable)
- Fixings in segregated compartment prevents ingress of water
- Pre-drilled 20mm entries giving easy cable access
- Box or Clam packaging
- All 13A sockets comply with BS1363
- 3 year guarantee on RCD socket outlets
- 10 year guarantee on socket outlet



### Passive latching

- Passive latching does not trip in the event of a power failure
- Suitable for passive devices such as fridges, freezers etc

### Active non-latching

- Trips in the event of a power failure
- Suitable for active devices such as power tools

# WEATHERPROOF

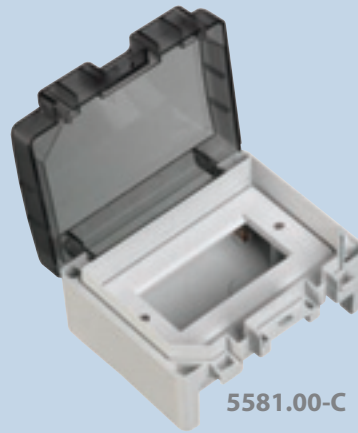
## IP55 Data Plate & Modules

### Data Plate

5581.00-C 4 module data plate enclosure\*  
(add modules as required)  
*\*Also available boxed - Cat no 5581.00*

### Modules

- S1428 Blank - 1/2 module - white
- S1429 Blank - 1 module - white
- S1430 Master telephone module - white
- S1431 Secondary telephone module - white
- S1432 RJ11 telephone module - white
- S1433 RJ45 module - white
- S1435 Co-ax male module - white
- S1436 Co-ax female module - white
- S1437 F-type module - white
- S1438 TV/FM diplexer module - white
- S1439 Triplexer module - white



5581.00-C



S1430 - S1439



5581.00-C with Slimline grid plate and modules

### Switches

If a 3g or 4g weatherproof switch is required use the 5581.00-C and the Slimline grid plate and modules.



### DATA PLATE

- Low pressure water jet proof with plug inserted ●
- Light grey with smoked tinted lid (detachable) ●
- Accepts standard 50 x 25mm modules ●
- Fixings in segregated compartment prevents ingress of water ●
- Pre-drilled 20mm entries giving easy cable access ●
- Box or Clam packaging ●
- 10 year guarantee ●
- 2 year guarantee for modules ●



# IP54 Socket Outlets

# WEATHERPROOF



5418.00-C



5418.20-C



5418.40-C



5428.00-C

## Socket Outlets

### Clam Packaged

- 5418.00-C 1 gang socket - light grey
- 5418.20-C 1 gang socket/SP switch combination - light grey
- 5418.40-C 1 gang socket/DP switch combination - light grey
- 5428.00-C 2 gang socket - light grey

### Box Packaged

- 5418.00 1 gang socket - light grey
- 5418.20 1 gang socket/SP switch combination - light grey
- 5418.40 1 gang socket/DP switch combination - light grey
- 5428.00 2 gang socket - light grey

## IP54 SOCKET OUTLETS

- Splash proof with plug removed
- 1 gang & 2 gang versions
- Twin lids on 2 gang sockets
- Fixings in segregated compartment prevents ingress of water
- Clear terminal markings
- Pre-drilled 20mm entries giving easy cable access
- Box or Clam packaging
- All 13A sockets comply with BS 1363
- 10 year guarantee



# WEATHERPROOF

## IP54 Switches

### Switches

#### Clam Packaged

- 5410.20-C 1 gang 2 way - light grey
- 5410.40-C 1 gang DP - light grey
- 5410.1B-C Bell push
- 5420.20-C 2 gang 2 way - light grey

#### Box Packaged

- 5410.20 1 gang 2 way - light grey
- 5410.40 1 gang DP - light grey
- 5410.1B Bell push
- 5420.20 2 gang 2 way - light grey



5410.1B-C



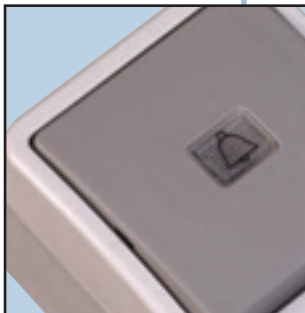
5410.20-C



5410.40-C



5420.20-C



### IP54 SWITCHES

- Splash proof with plug removed ●
- 1 gang & 2 gang versions ●
- Fixings in segregated compartment prevents ingress of water ●
- Pre-drilled 20mm entries giving easy cable access ●
- Box or Clam packaging ●
- Complies with BS EN 60669-1 ●
- 10 year guarantee ●





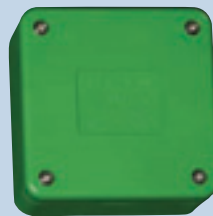
C3371



C3371T



C3377



1220

## Weatherproof Plastic Boxes

C3371	80 x 80 x 52 mm IP65
C3371T	80 x 80 x 52 mm with 5 way terminal block IP65
C3372	93 x 93 x 55 mm IP65
C3373	110 x 110 x 67 mm IP65
C3374	140 x 140 x 79 mm IP65
C3375	180 x 180 x 91 mm IP65
C3376	250 x 250 x 115 mm IP65
C3377	75 x 75 x 42 mm with stepped grommets IP54
1220	Earthing inspection box

## JUNCTION BOXES

- Rated at IP65 (except C3377 & 1220)
- 5 way terminal block supplied with C3371T
- Caps supplied to go over fixings preventing water ingress



### PIR Detectors

- 309 1100W adjustable 180°  
PIR - white
- 309B As above in black  
- Detection range 180° at 12m  
- Auto off/manual over-ride  
switching function  
- Maximum lighting load  
1100W (incandescent) or  
500W (fluorescent)
- 310 2200W adjustable 180°  
PIR - white  
- Detection range 120° only  
at 14m  
- Auto off switching function  
- Maximum lighting load  
2200W (incandescent) or  
500W (fluorescent)
- 311 1100W adjustable corner  
mounted 270° PIR - white  
- Detection range 200° only  
at 12m  
- Auto off/manual over-ride  
switching function  
- Maximum lighting load  
1100W (incandescent) or  
500W (fluorescent)



309

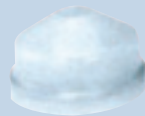


310



311

## Photocells



JPZ30507



JPZ30527



JPZ3061



JPZ3063

### Photocells

#### Electronic

- JPZ30507 Cell head
- JPZ3061 Cell kit  
- 5 amp load  
switching capacity
- JPZ30527 Cell head
- JPZ3063 Cell kit  
- 5 amp load switching  
capacity  
- Surge protection



### PHOTOCELLS

- Available as head only or in kit form
- Compatible Nema socket
- 15 secs switching delay
- <0.5W power consumption
- In compliance with EN 50081-1 & EN 50082-1
- 70 lux switching
- 1 year guarantee

### PIR DETECTORS

- In compliance with EN 60669-2-1
- Recommended unit mounting height  
1.8m - 2.5m approx
- Suitable for wall or ceiling mounting  
(except 311- suitable for wall mounting only)
- Adjustable timer 5 sec - 12 min
- Built in sensor prevents daytime operation
- Rated IP44
- 1 year guarantee

