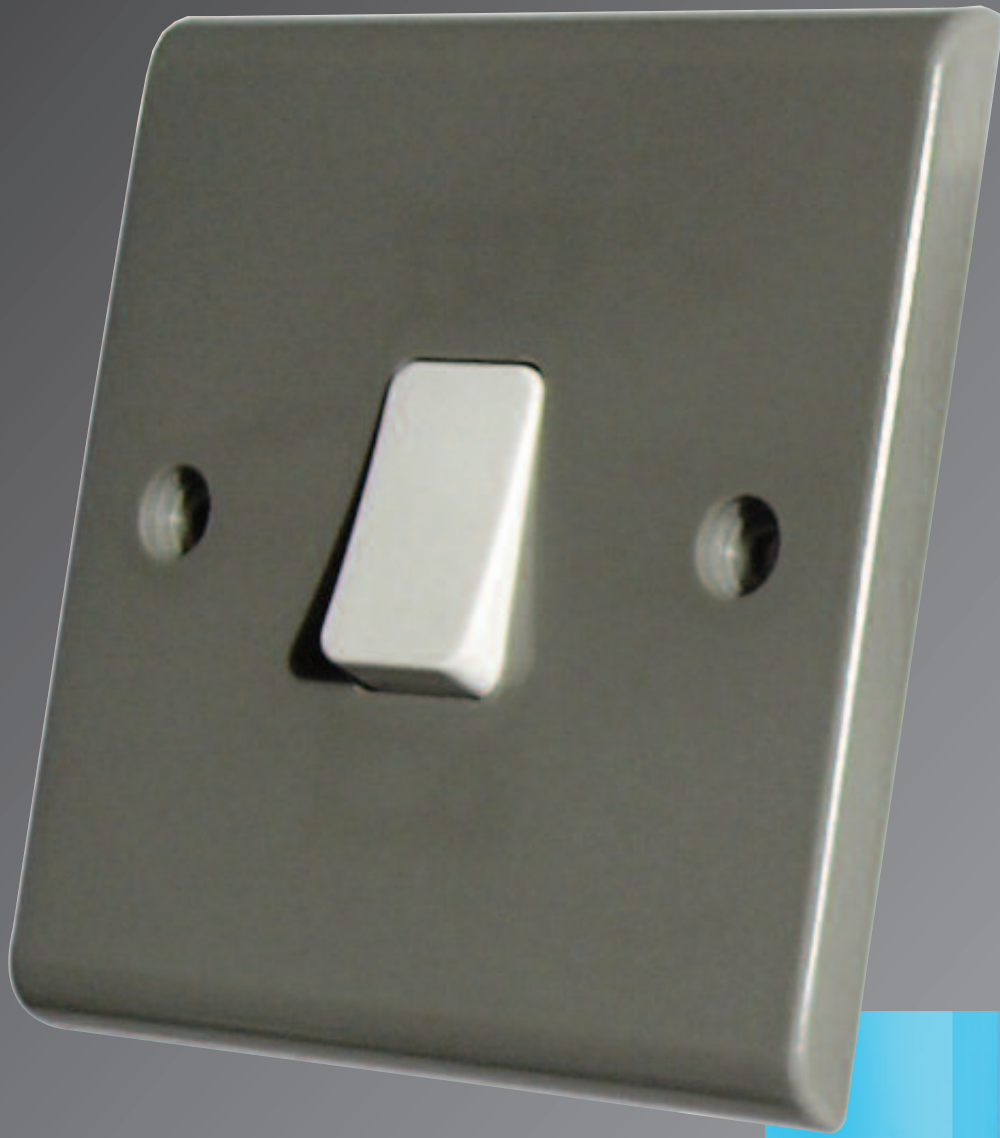


DETA



Part M Compatible Accessories

PART M

Issued under Building Regulations 2000, Approved Document M (commonly referred to as Part M) covers the access to and use of building structures and facilities by disabled people and partially sighted people. It requests the provision of side doorways, suitable accessibility to sanitary facilities, passenger lifts, wheelchair access and so on.

Part M goes on to discuss switches, outlets and controls, and that consideration should be given to their position within the room design (under sections 4.25 to 4.30) to ensure accessibility, visibility and ease of use.

The regulation requires that users can determine what setting a control or switch is on without inadvertently changing its setting (section 4.27).

It is therefore an advantage to have individual switches on panels in the form of large touch plates and on multiple socket outlets that the switches are well separated. This will avoid the inadvertent selection of an adjacent control by visually impaired people and people with limited dexterity (section 4.29).

To assist visually impaired people, the regulations require controls to contrast visually with their surroundings (section 4.28).



DETA



Outboard switch sockets with switches set wide apart to avoid inadvertent switching of appliance.



1 gang switch socket prevents inadvertent operation of switch.



Wide rocker plate switch for ease of operation.



Contrasting colour plate to background.

DETA



Stylish finishes with contrasting switches.



Black switches with a white surround for dark coloured walls.



Mixing and matching of products can meet requirements.



Gridswitch offers flexibility of module arrangement and with separated switches.

PART M

Deta Electrical offers a wide range of products which allow the specifier to design an installation to meet the requirements of Part M, as well as having a dedicated range of Part M wiring accessories.

Within our range there are plate switches with large touch plates which can be operated easily by those with limited dexterity. Also, the switch rockers on our two gang plate switches are separated, preventing inadvertent operation.

Our two gang socket outlets also have switches that are separated, and we offer a socket outlet where the switches are on the outside edges. Deta socket outlets are available with neons making it easier for the user to determine if the switch is on or off.

To aid visibility, Deta's dedicated Part M range has a grey frontplate with white switches making them easily visible to the visually impaired as the switches surround contrasts with a light colour background.

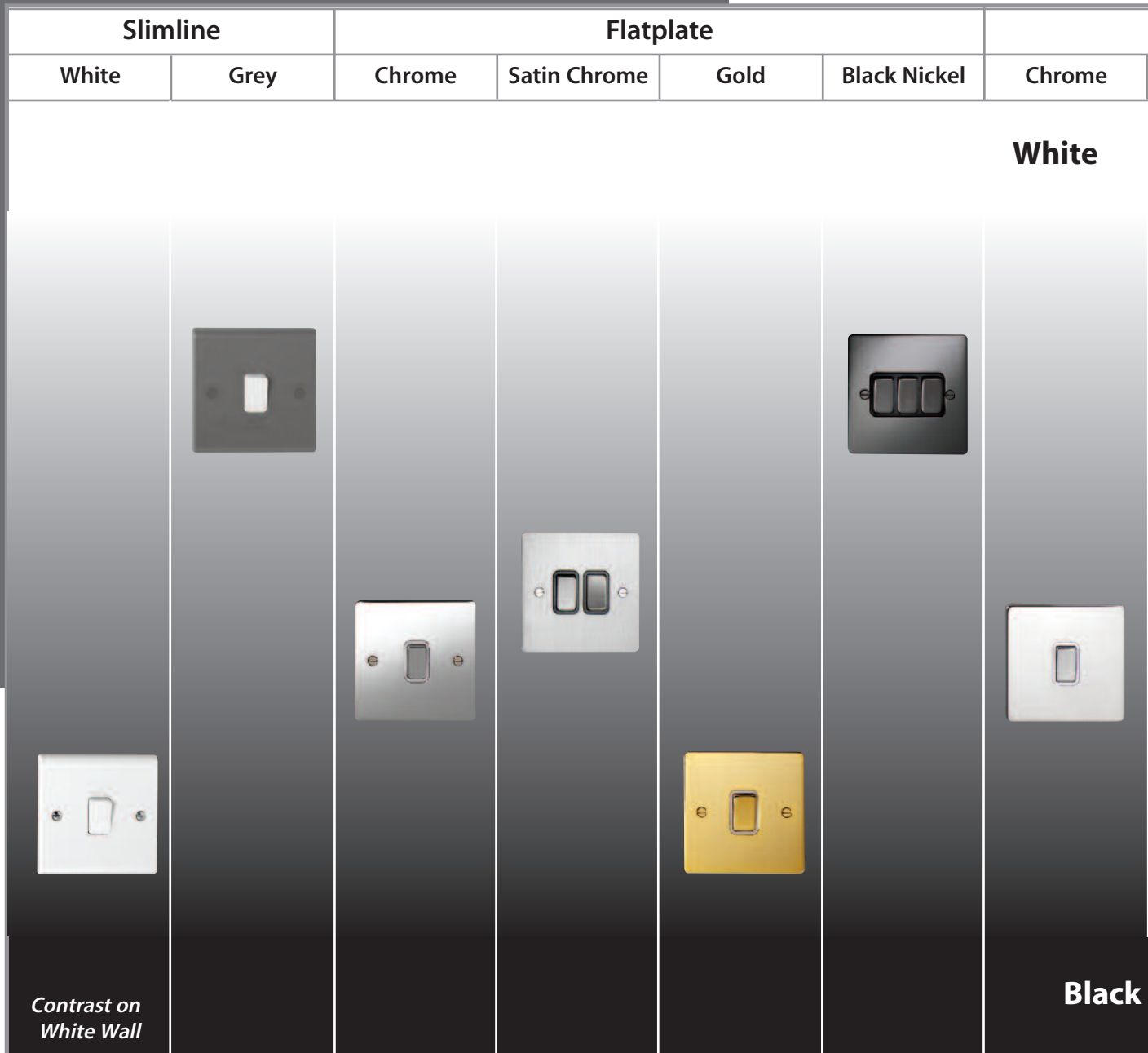
To determine whether a switches surround contrasts sufficiently with its background it is recommended that there is a 30 point different between the background and the switch surround.



To explain this further, white (if pure) has a light reflective value (LRV) of 100, and black has a LRV of 0, then a switch surround should have a LRV of 70 or less if mounted on a white background.

Deta Electrical has had all of its ranges tested for their LRV value, including the dedicated Part M range, and by using these values with the known LRV of the background compliance to Part M can be assured.

The table overleaf shows the light reflective values of all the finishes within our ranges of wiring accessories, as well as how they contrast with a pure white wall.



Light Reflective Values

Where a socket, switch or control needs to be highly visible, it is considered to meet Part M if it has at least a 30 point difference to its background.

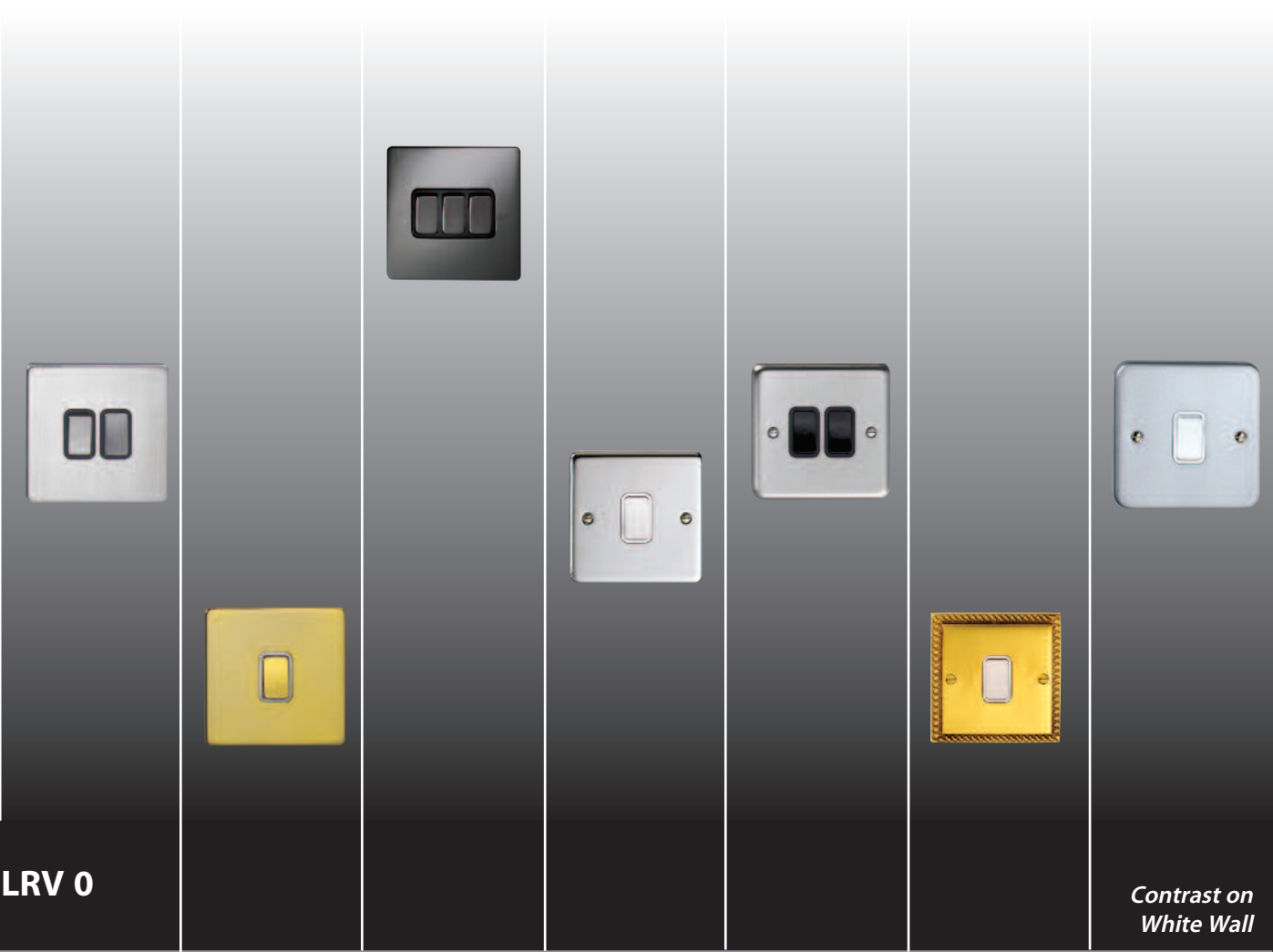
Deta's Slimline Grey range has an LRV of 20 and white has an LRV of 100 then there is an 80 point difference between the socket/switch and its background. Black totally absorbs light (LRV 0).

The table shows the Light Reflective Value (LRV) of the different finishes within Deta's ranges.

Light Reflective Values		
DETA RANGE	LRV	Contrast on White Wall
Slimline White	68	32
Slimline Grey	20	80
Flatplate Chrome	56	44
Flatplate Satin Chrome	41	59
Flatplate Gold	66	34
Flatplate Black Nickel	22	78
Metalclad Aluminium	38	62

Screwless			Decorative			Metalclad
Satin Chrome	Gold	Black Nickel	Chrome	Satin Chrome	Brass	Aluminium

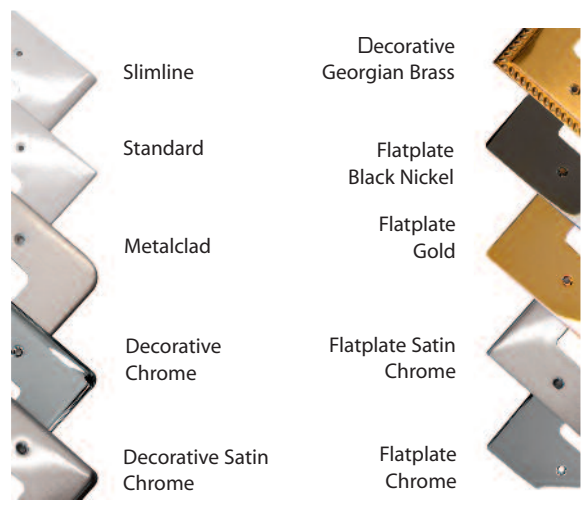
LRV 100



LRV 0

Contrast on White Wall

Light Reflective Values		
DETA RANGE	LRV	Contrast on White Wall
Decorative Chrome	56	44
Decorative Satin Chrome	41	59
Decorative Georgian Brass	65	35
Decorative Victorian Brass	65	35
Screwless Chrome	56	44
Screwless Satin Chrome	41	59
Screwless Gold	66	34
Screwless Black Nickel	22	78



Slimline Grey Range

PART M



S1456



S1457



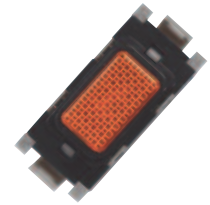
S1461



S1453



G3392



"It is also important to note that the colours red and green should not be used in combination as indication of 'on' and 'off' for switches and controls as this is not suitable for colour blind people. Lettering or a neon light should be used for this purpose."

Sockets - 13A DP

Slimline Grey

- S1451 1 gang Switched Socket
- S1451P 1 gang Switched Socket with neon
- S1453 2 gang Switched Socket
- S1453P 2 gang Switched Socket with neon

Switches - 10A 2W

Slimline Grey

- S1456 1 gang Switch
- S1457 2 gang Switch
- S1458 3 gang Switch
- S1461 1 gang Wide Rocker Switch
- S1462 2 gang Wide Rocker Switch
- S1463 Intermediate Wide Rocker Switch

Connection Units

Slimline Grey

- S1471 Switched Spur with neon
- S1474 Switched Spur with bottom flex outlet
- S1475 Switched Spur with neon and bottom flex outlet

High Current Switches

Slimline Grey

- S1481 20A DP Switch with Neon
- S1485 45A DP Tall Switch with Neon
- S1489 Cooker Control Switch with Neons

Shaver Socket

Slimline Grey

- S1490 Shaver Socket

Data Plates

Slimline Grey

- S1492 Two Module Data Plate
- S1494 Four Module Data Plate

RANGE FEATURES

- Colour coded terminals on socket outlets
- Terminal entries are shaped to assist with termination
- Only one size 4mm screwdriver required
- In compliance with BS EN 60669-1
- 25 year guarantee

Gridswitch

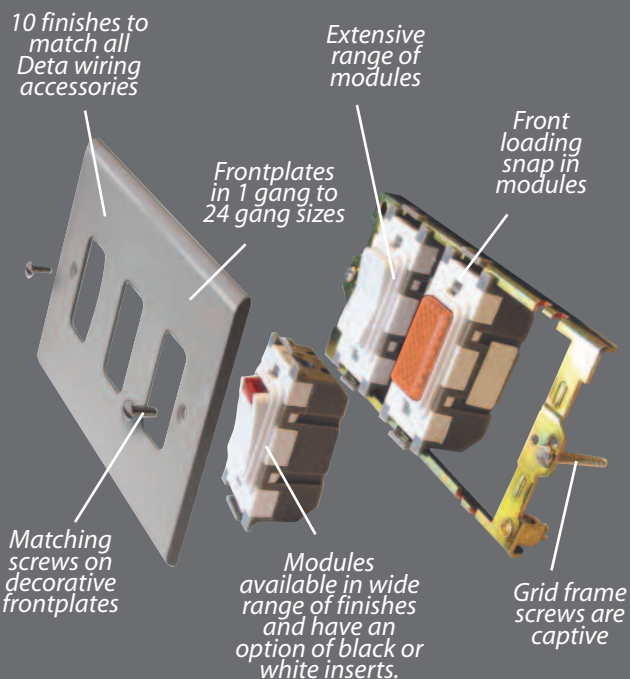
Where larger switch panels are required Deta's range of gridswitch is ideal.

A range of grey frontplates are available where the switches are separated to avoid inadvertent control of a switch.

The remaining Deta Grid products offer a range of finishes which also cohere to the Part M regulations giving designers and contractors the ability to mix and match modules and frontplates (up to 24 gang) to meet project and industry requirements.

For further details visit

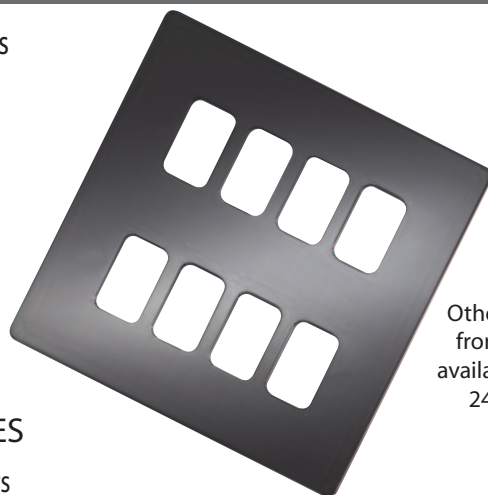
www.detaelectrical.co.uk



Gridswitch Frontplates

Slimline Grey

G3391	1 gang
G3392	2 gang
G3393	3 gang
G3394	4 gang
G3395	6 gang
G3396	8 gang



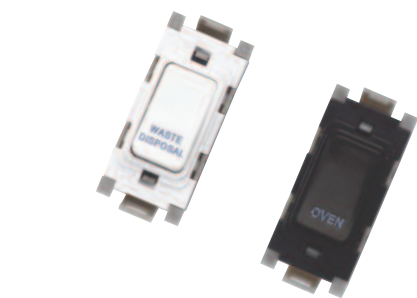
Other colour frontplates available up to 24 Gang

SWITCH MODULES

- Curved rockers
- Front loading into grid frame
- Switches are X rated and do not have to be de-rated for fluorescent loads
- Clear terminal markings
- Grey font engraving
- Only one size 4mm screwdriver required
- In compliance with BS EN 60669-1
- 25 year guarantee

For full range listing visit www.detaelectrical.co.uk

TELESALES HOTLINE 01582 544 544



Deta Electrical Company Ltd

Kingsway House

Laporte Way

Luton

Bedfordshire

LU4 8RJ UK

www.detaelectrical.co.uk

E-mail: sales@detaelectrical.co.uk

Tel: + 44 (0)1582 544 544

Fax: + 44 (0)1582 544 545